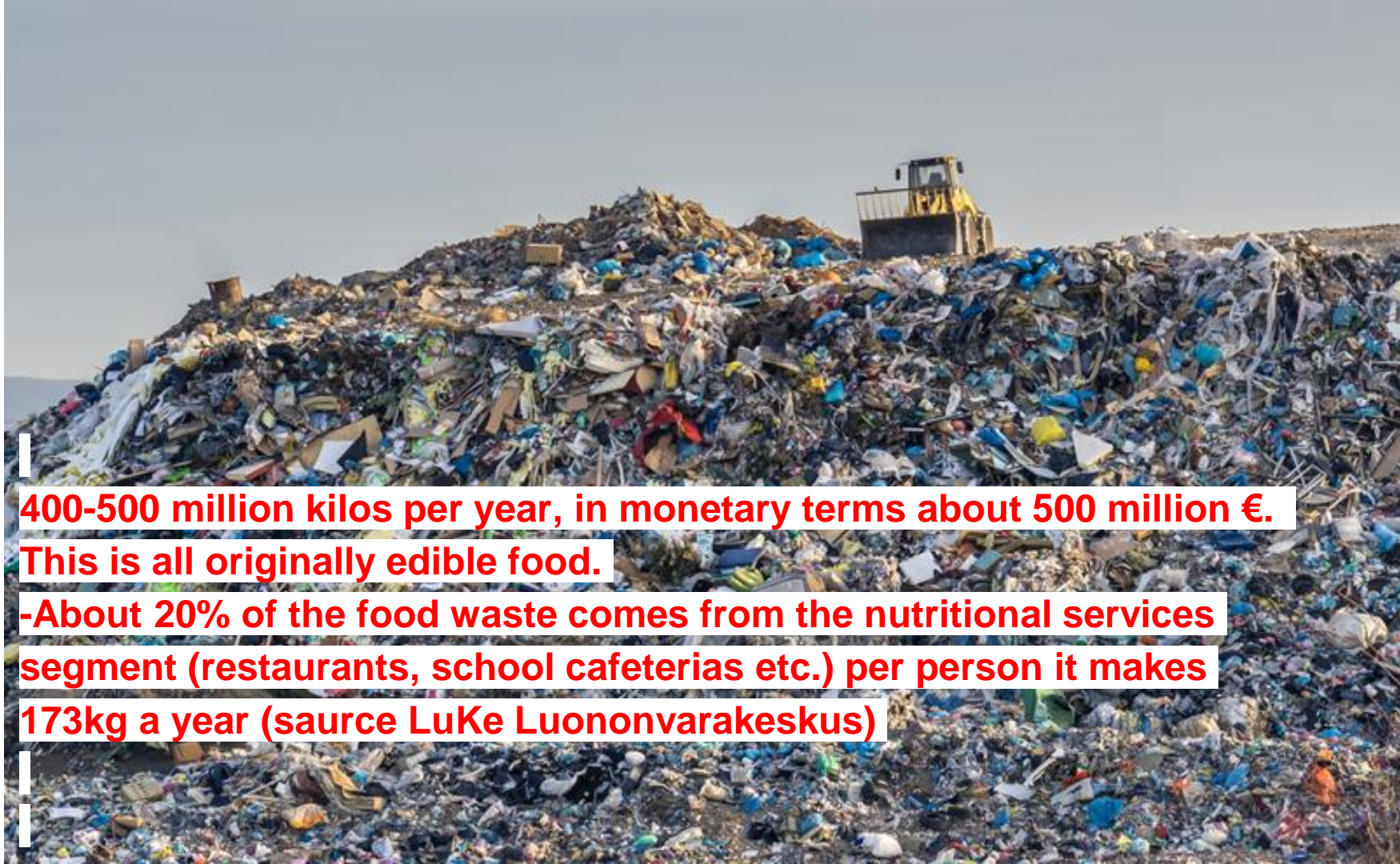


NOLLA

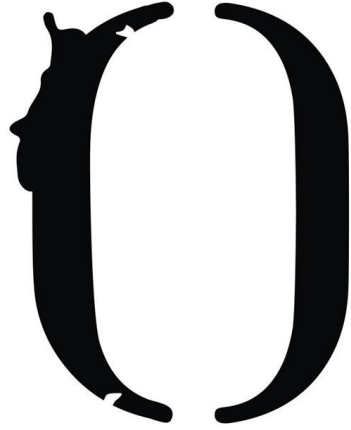




**400-500 million kilos per year, in monetary terms about 500 million €.**

**This is all originally edible food.**

**-About 20% of the food waste comes from the nutritional services segment (restaurants, school cafeterias etc.) per person it makes 173kg a year (source LuKe Luononvarakeskus)**



NOLLA



0 NOLLA Restaurant Nolla 5.9.2018

# TULOKSET - RUOKAHÄVIKIN KEHITYS

VAHDA KAAVIO

TARKASTELUVÄLI

Viikko

ALOITUSPÄIVÄ

28 Feb 2018

LOPETUSPÄIVÄ

5 Sep 2018

SYNTYPAIKAT

PIIRRÄ KAAVIO

HÄVIKKIMESTARI











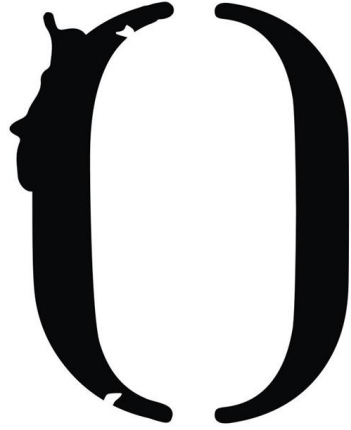








KAFFA ROASTERY

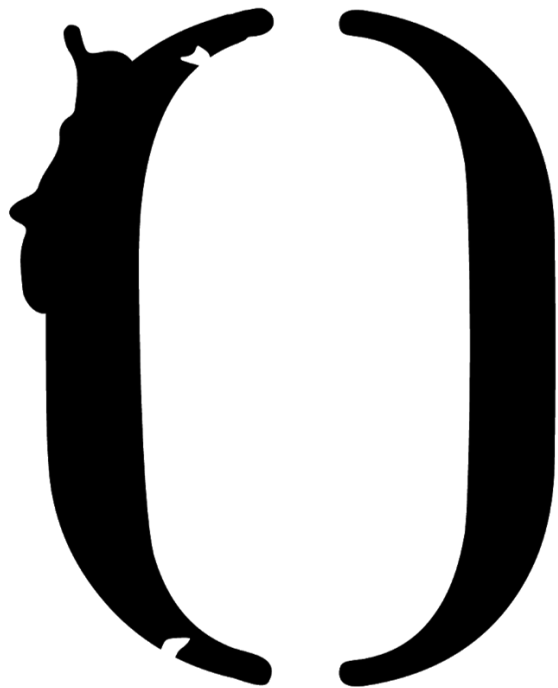


NOLLA









[www.restaurantnolla.com](http://www.restaurantnolla.com)



@restaurantnolla



@restaurantnolla